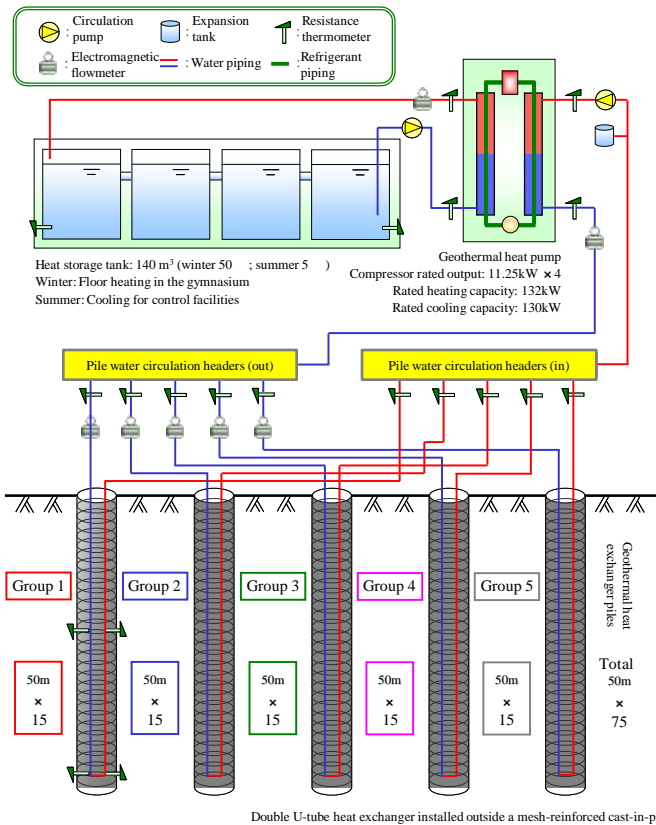
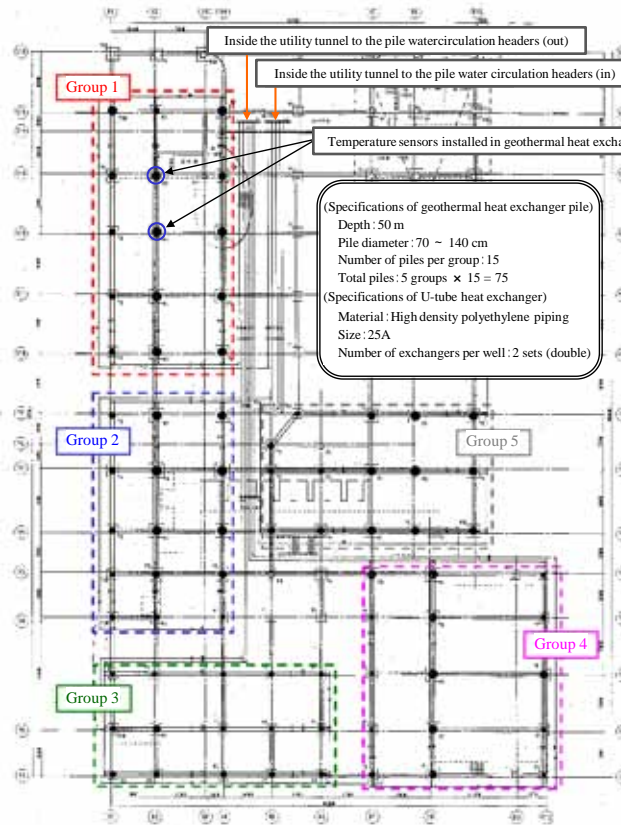


Geothermal Heat Pump System Using Foundation Piles

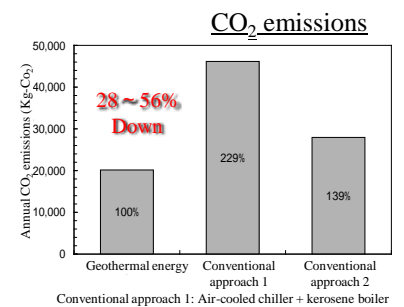
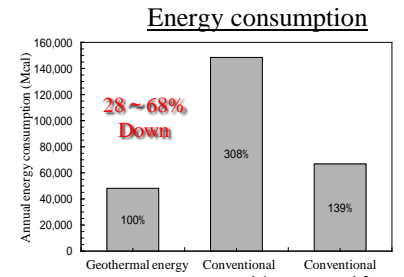
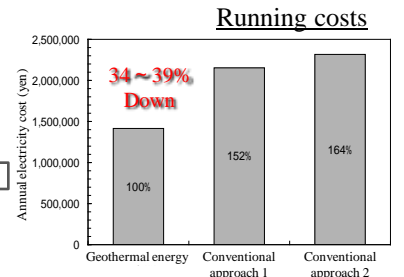
Heating and cooling system using water thermal storage geothermal heat pump at Akita City Sanno Junior High School



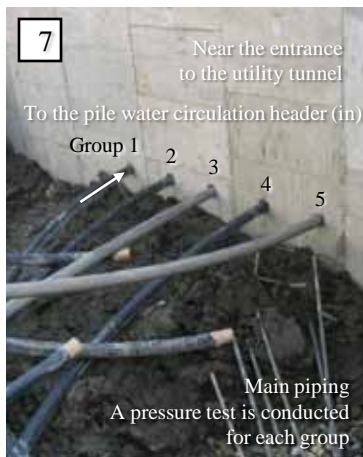
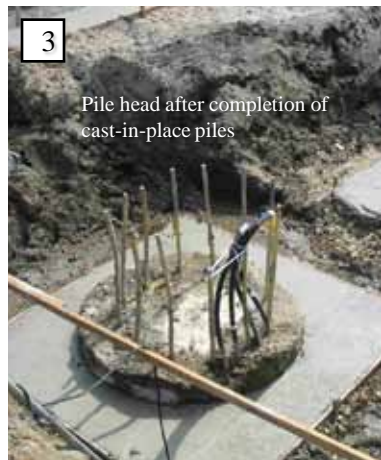
Concept of Water Thermal Storage Geothermal Heat Pump System



Integrated Geothermal Heat Exchanger Pile System



Source: "Report on Installation of Heating and Cooling System with Geothermal Heat Pump System Using Foundation Piles at Akita City Sanno Junior High School," by the General Affairs Department (responsible for facilities), Akita City Board of Education, 2006



◆ Inquiries to:

Drilling Department, Natural Resources and Energy Engineering Division

1-14-16, Kudan Kita, Chiyoda-ku, Tokyo 102-8205

TEL +81-3-3221-2471 FAX +81-3-3221-2472

1-3-6, Ogimachi, Oaza, Hirosaki-shi, Aomori Prefecture 036-8104

TEL +81-172-29-5171 FAX +81-172-29-5173

